



- Dual-core architecture for high speed managed data services
- AppInside* for process intensive IDS&IPS*, NetBooster* and PacketSmart
- High speed standard 1000Base-T interface or SFP interface
- G.SHDSLbis TC-PAM 64/128** Ethernet First Mile option
- High-performance for branch-office of 50 to 200 data-only desktops
- Sophisticated IP QoS, in-built security and SIP Trunking
- Industry leading price performance
- Simple deployment, provisioning and management, industry standard CLI
- Green product: low power consumption; no fan



Deploy and Accelerate Cloud Services to the Mid-Market

The ONE1540 Multi-service Access Router is designed for service providers capitalizing on new and emerging cloud services. Collapsing three roles into a single platform - Router, IP Trunking and AppInside – the ONE1540 protects service provider margins and enhances service flexibility, whilst delivering an improved Cloud experience to end users.

The ONE1540 is OneAccess' high-performance Data router, with dual-core network processors to boost performance, and high-speed Gigabit Ethernet or GPON uplink. The state-of-the-art dual-core processing architecture has a dual purpose: it provides accelerated IP routing to match expanded, symmetrical uplinks; and it concurrently provisions AppInside to run Security and Cloud applications and other value-add applications to enhance service delivery and user experience.

Processing intensive applications leveraging the AppInside technology run on a dedicated processor core: Cloud performance (NetBooster) and PacketSmart (VoIP monitoring) deliver richness, assurance and simplicity to new Cloud and service introductions.

The ONE1540 is designed to provide 50 to 200 desks with sophisticated, symmetrical broadband, value-add data services. As part of OneAccess' dual-core architecture router range, it is a perfect fit for operators targeting medium-sized enterprises, or branch offices of large enterprises, with a portfolio of managed and value-add Cloud-based services. All this whilst setting a new green benchmark for low power consumption.

Enterprise-Class Services

The ONE1540 comes with a combo port uplink with a copper 1000Base-T interface as standard as well as an SFP interface alternative for GPON ONT, 1000Base-X and 100Base-X modules. An additional G.SHDSLbis Ethernet in the First Mile interface with TC-PAM 64/128** offering speed up to 60Mbps can be specified for redundancy.

IP-PBXs, server rooms and local area networks are connected to each other and the wide area network via the built in 4 ports Gigabit Ethernet (GigE) switch and benefit from VRF and IPv6 services among others. The ONE1540 can be optionally specified with WiFi, supporting 802.11 b, g and n.

The ONE1540 platform supports symmetrical, high speed Layer 3 switching at next generation broadband throughputs, with sophisticated QoS. In-built IP VPN capabilities enable the seamless networking of enterprise branch offices. In addition, SIP Trunking provides connectivity to service provider IP PBXs.

Reducing Total Cost of Ownership

As well as opening the door to new revenue opportunities, the ONE1540 helps achieve long-term cost savings. As a service provider, the opportunity to replace multiple dedicated CPEs (Security, Cloud performance and VoIP troubleshooting) with a single, flexible unit means reduced capital costs and simpler logistics and operations.

Moreover, a suite of provisioning tools makes roll out simpler, less prone to error and significantly more cost effective. For instance, auto-discovery options simplify initial set-ups. Tried and tested configurations can then be 'cloned' to new installations from the network operations centre (NOC). The industry standard CLI removes the need for technician training. A set of embedded tools and service level indicators – for example, voice quality audit functions including jitter monitoring and mean opinion score (MOS) statistics - make it simple to manage and assure the customer experience remotely, virtually removing the need for maintenance truck rolls.

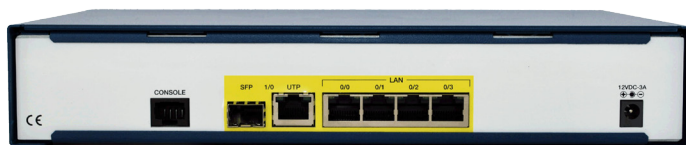
ABOUT OneAccess

OneAccess designs and develops a range of world-class multi-service routers for over 140 global service provider customers including four of the top five operators in Europe. This makes OneAccess the number two branch office router solution provider in the world by volume.

With an international support network operating from offices in North America, Europe and Asia, OneAccess is able to work closely and cooperatively with all its clients throughout the development and roll-out phases for new services.



Technical Features



General

- Single or dual WAN uplinks
- 4 port Gigabit Ethernet LAN switch
- AppInside optional 3rd party applications
- Optional Wireless LAN

Gigabit Ethernet WAN Interface

- Combo port: the uplink is a copper standard port or the configurable SFP slot for 100BASE-X or 1000BASE-X, GPON

SHDSL Interface (factory option)

- G.SHDSLbis ITU-T G.991.2 – 2 or 4 line pairs
- ATM and EFM
- Bonding based on EFM, SHDSL or ATM IMA
- TC-PAM 64/128 **
- RJ-11 connectors (2 RJ-11 for 4 pairs)

LAN Interfaces

- Ethernet, Fast Ethernet, Gigabit Ethernet
- 4 port switch 10/100/1000BASE-T auto-sense
- Automatic cross-over
- RJ-45 connectors

Wireless LAN (factory option)

- Dual mode IEEE 802.11b/g/n
- Two detachable antennas
- WMM QoS
- Encryption options WEP, WPA 1.2 (TKIP) and WPA 2.0 (802.11i, AES-CCMP)
- Authentication options WPA-PSK (pre-shared key) and 802.1x with a RADIUS server (PEAP, EAP-SIM, EAP-TLS and EAP-TTLS)

AppInside optional applications

- PacketSmart*
- NetBooster**
- OneSecure Intrusion Detection and Intrusion Protection System (IDS&IPS) **

Console port

- RS232 – RJ-45 port

Performance

- LAN to LAN: 440Kpps

IP Addressing & Routing

- Pv4 and IPv6
- NAT/NAPT: static/dynamic NAT, NAPT, selective NAT, twice NAT, Application pass-through
- DHCP client, server, relay, IP helper addresses
- DNS proxy, DNS server update protocol: DynDNS
- Routing protocols: RIP v1/v2, OSPF v2, BGP v4
- Multicast Routing: PIM-SM and IGMP v2/v3
- Policy-Based Routing
- VRRP, VRF
- Server load balancing

IP Quality of Service

- IP Classification and priority (DiffServ)
- Class-Based Queuing (CBQ), CB-WFQ on LAN/WAN interfaces
- Low Latency Queuing, fragmentation and interleaving
- Policing and remarking
- RED, WRED, ECN

PPP

- PPP over ATM, PPP over Ethernet (PPPoE) on Ethernet, EFM (VDSL2/SHDSLbis) and ATM (ADSL2+/SHDSLbis) interfaces
- Automatic IP address assignment
- MLPPP bonding with fragmentation and interleaving
- PAP/CHAP authentication
- IPCP subnet mask support
- MAC address based authentication

Security

- Firewall with stateful packet inspection
- Standard and extended access lists
- Session monitoring and limiting
- Configurable timers per port and application
- All firewall log messages can be buffered, viewed or sent to a syslog server
- Zone Based Firewall with ASIP*

IP VPNs

- IPsec, GRE, IPIP, L2TP
- IPsec encryption: AES, DES, 3DES
- IPsec tunnel and transport mode IKE and PKI, AH and ESP with SHA1 and MD-5 hashing
- UDP-based encapsulation for NAT traversal
- IKE with pre-shared secret, symmetrical or client-server mode
- Perfect Forward Secrecy
- Easy VPN and GET VPN with ASIP*

Bridging and VLANs

- Bridging & Integrated Routing and Bridging (IRB)
- VLAN tagging and un-tagging
- Multiple VLAN IDs per port
- 802.1p priority tagging, TOS/COS and COS/TOS mapping

Management

- Industry standard Command Line Interface (CLI)
- Telnet, SSH, HTTPS
- Web-based configurator for LAN and WLAN
- SNMP V1/V2C/V3
- Support of user privileges
- FTP/TFTP upload/download configuration and binaries
- QoS measurement probe
- Traceroute, ping, extended ping
- User authentication via RADIUS or TACACS+
- RADIUS accounting
- Global statistics screens (console, web-based). Event and trace buffering
- Syslog client
- Flow capture and decoding

Dimensions

- Desktop, wall mountable
- W x H x D: 275 x 55 x 150 mm; Weight: 1.3 kg

Power supply

- External adapter 12V – 3A
- Voltage range: 110-230 VAC – 50/60 Hz
- Power consumption: <35 W

* Subject to a separate license

** Cf. Roadmap